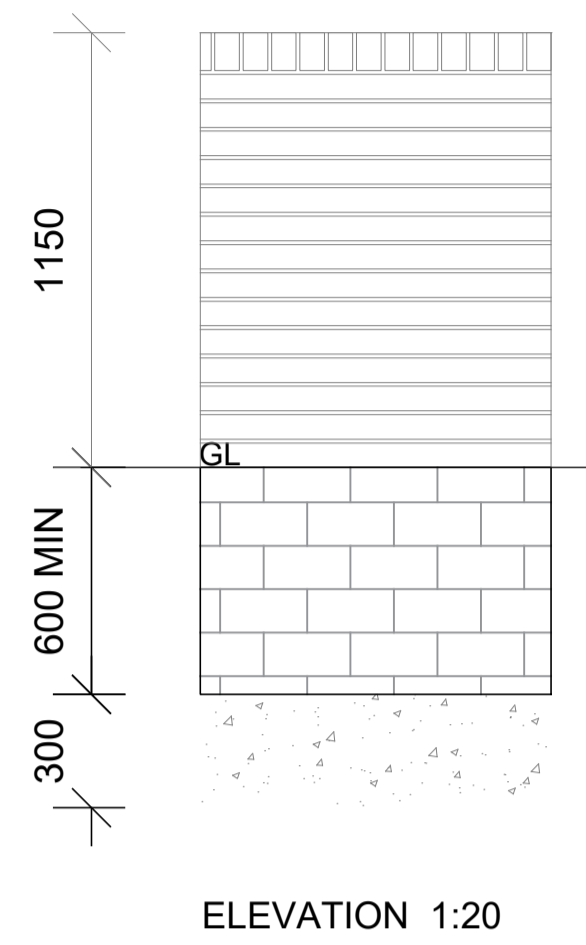
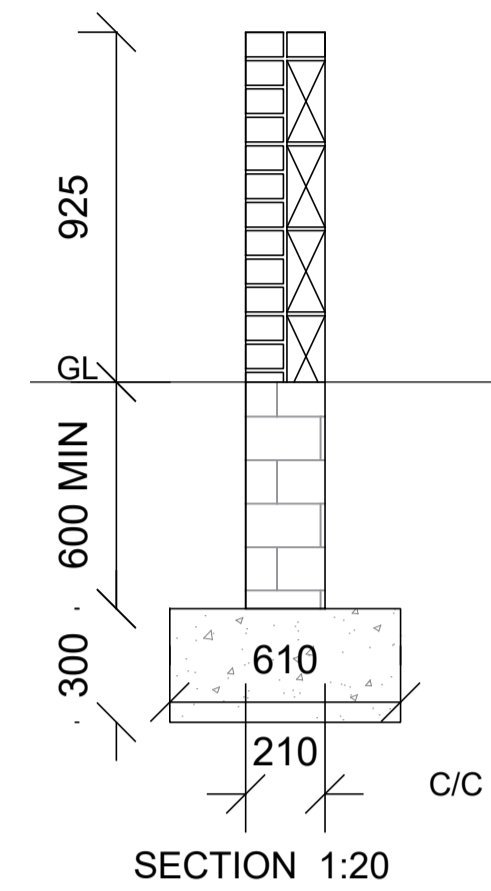


SECTION 1:20

BOUNDARY TYPE 1 - BRICK FACED BLOCKWORK 1150MM

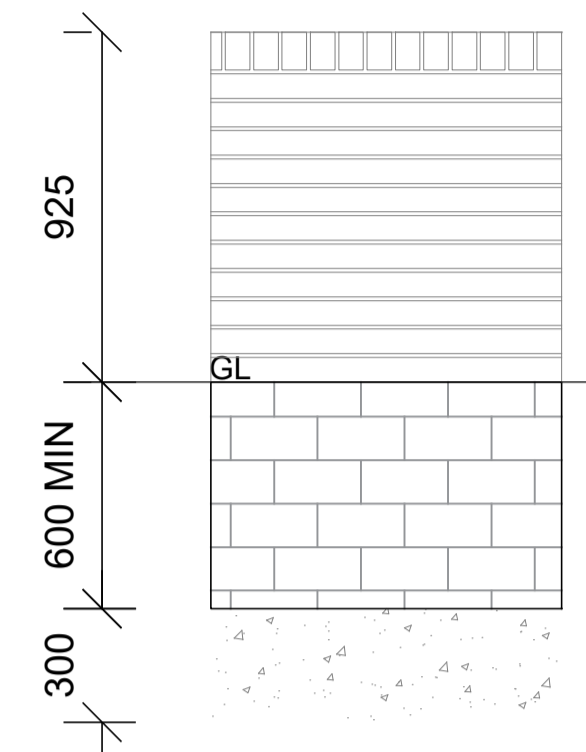


ELEVATION 1:20

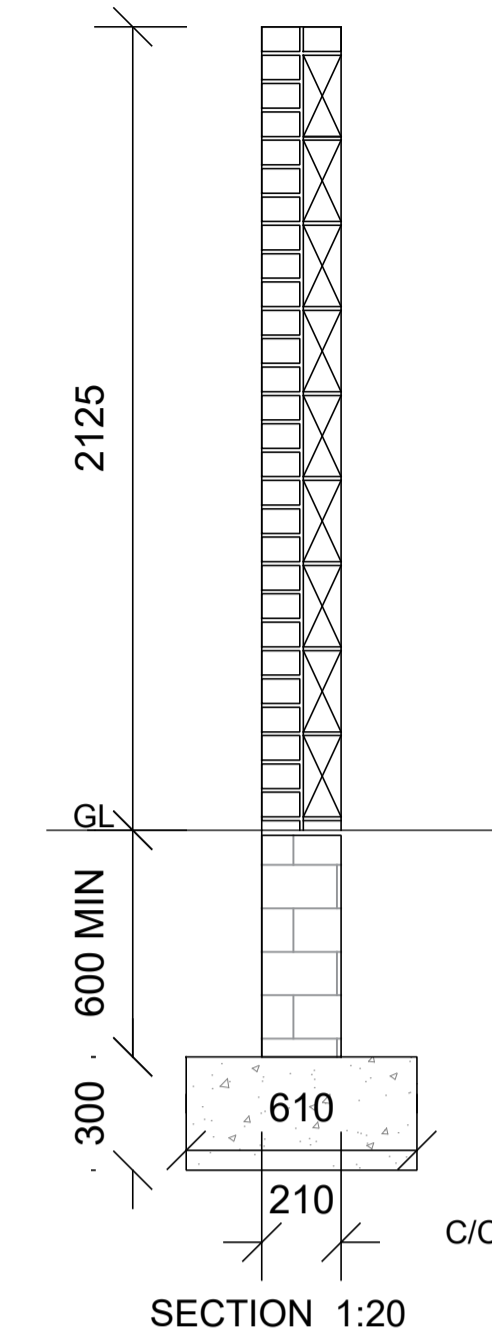


SECTION 1:20

BOUNDARY TYPE 2 - BRICK FACED BLOCKWORK 925MM

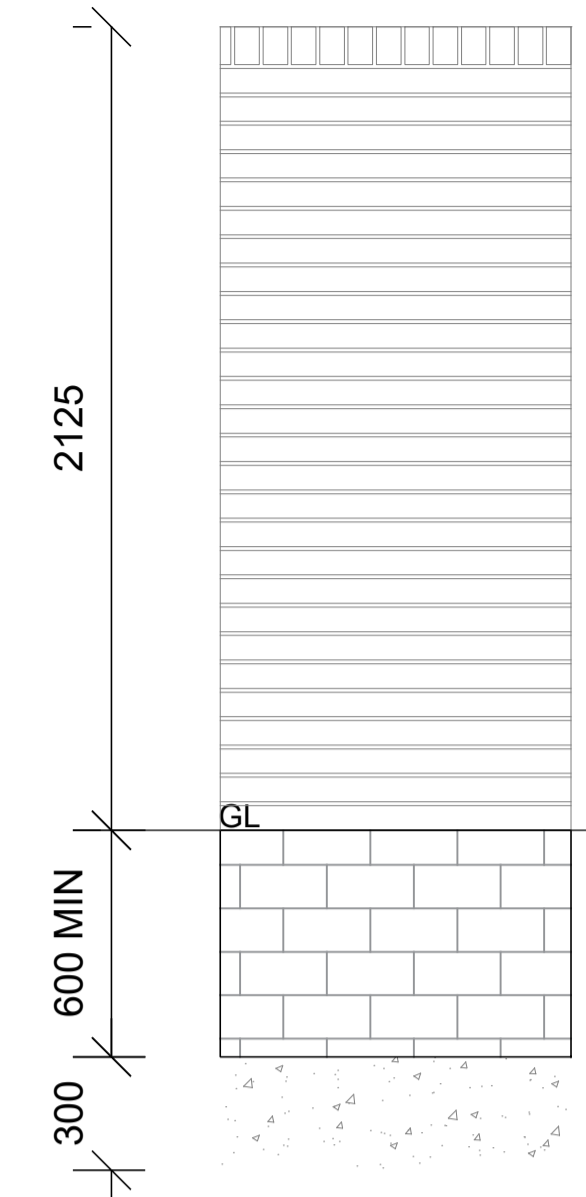


ELEVATION 1:20

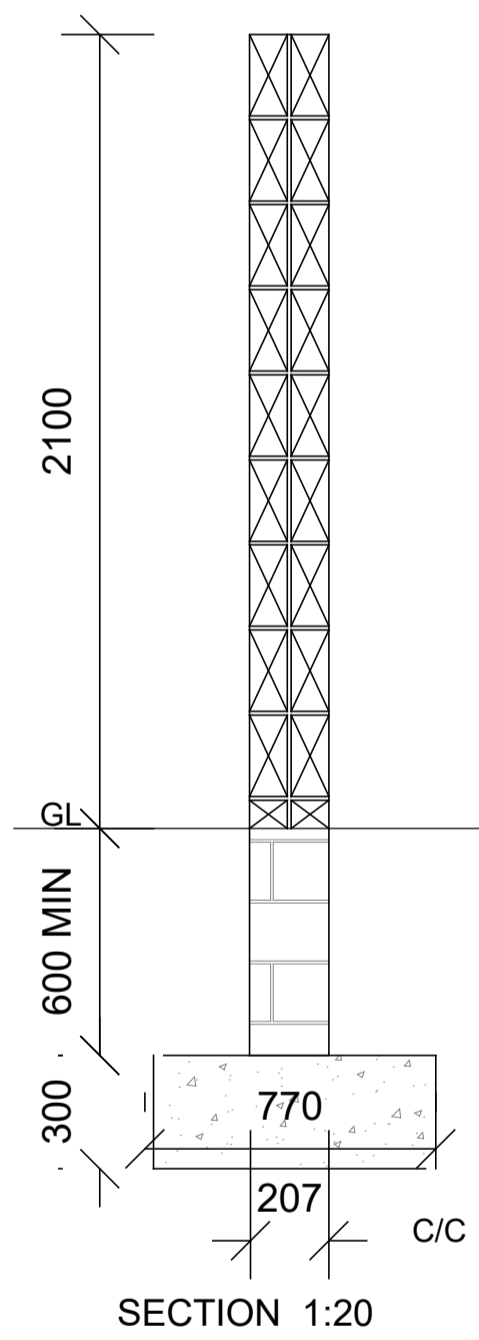


SECTION 1:20

BOUNDARY TYPE 3 - BRICK FACED BLOCKWORK 2125MM

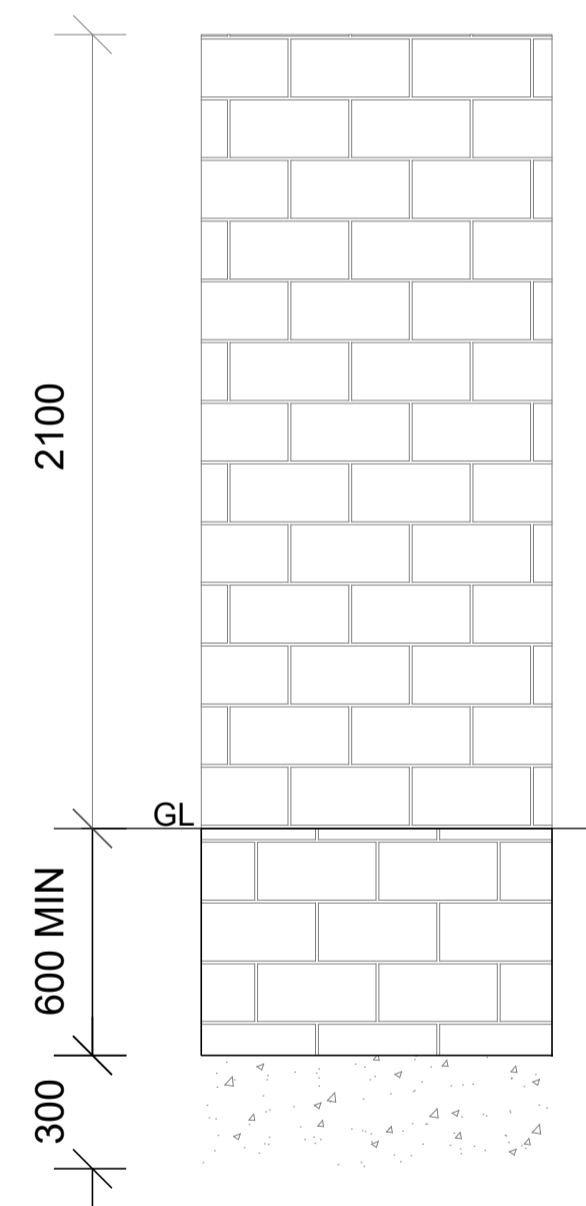


ELEVATION 1:20

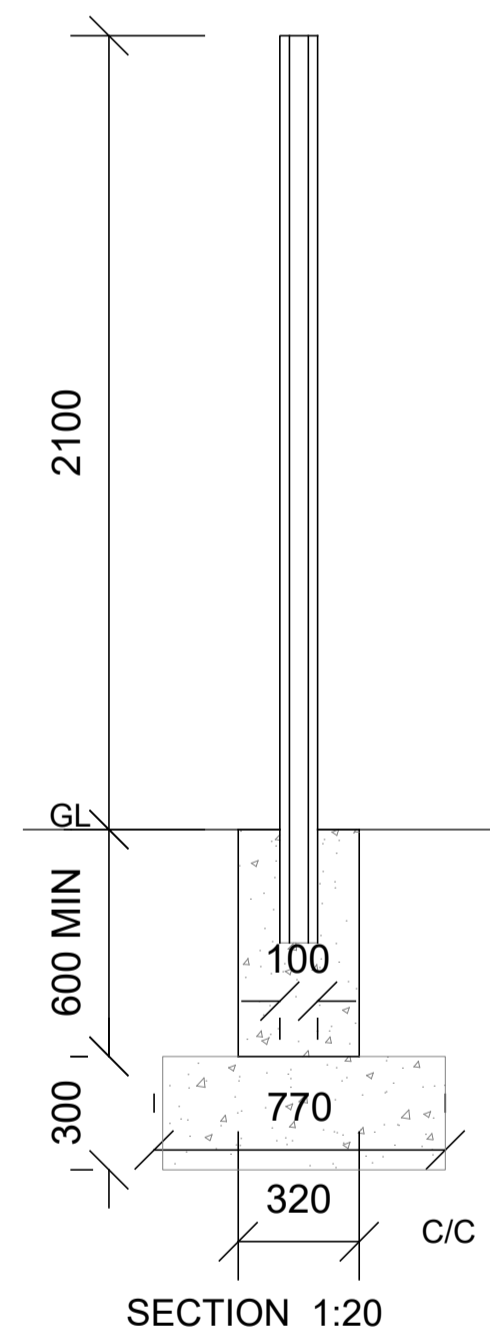


SECTION 1:20

BOUNDARY TYPE 4 - FAIRFACED BLOCKWORK 2100MM

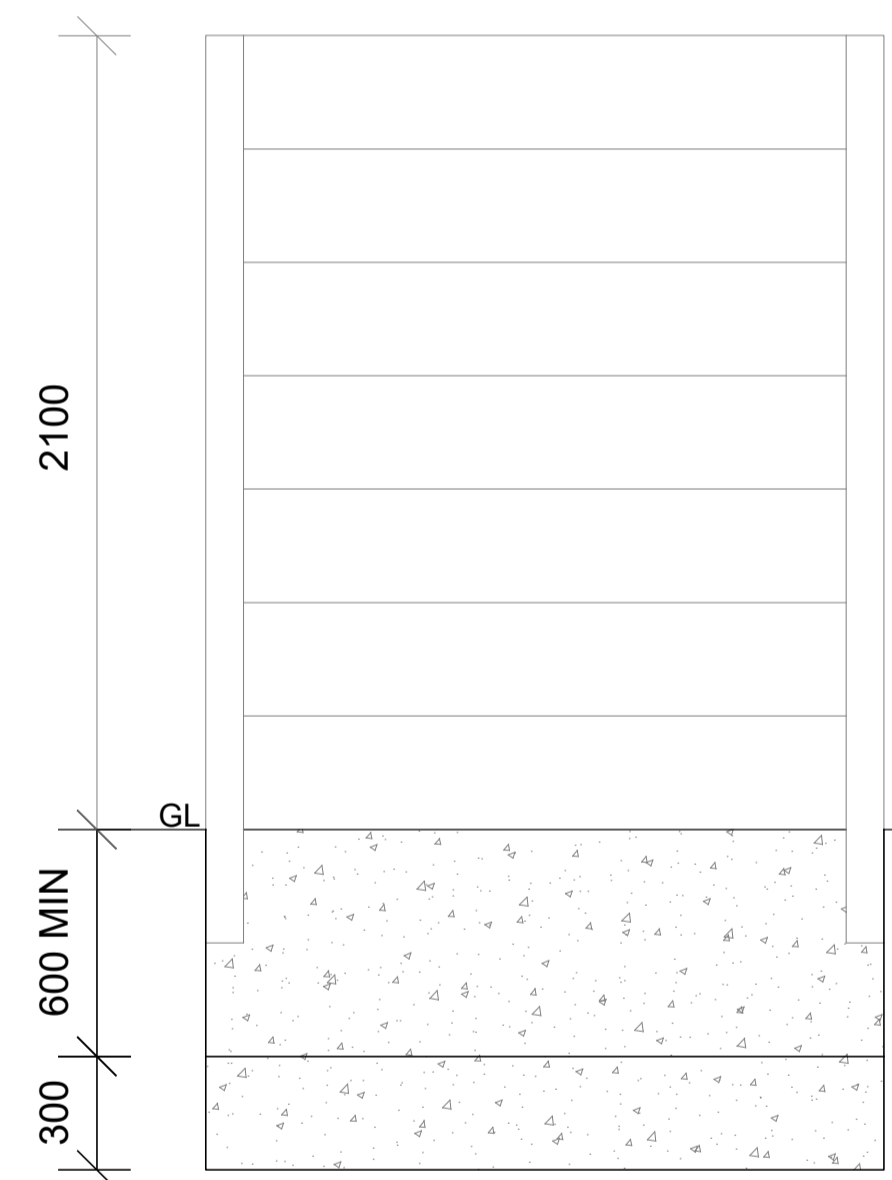


ELEVATION 1:20

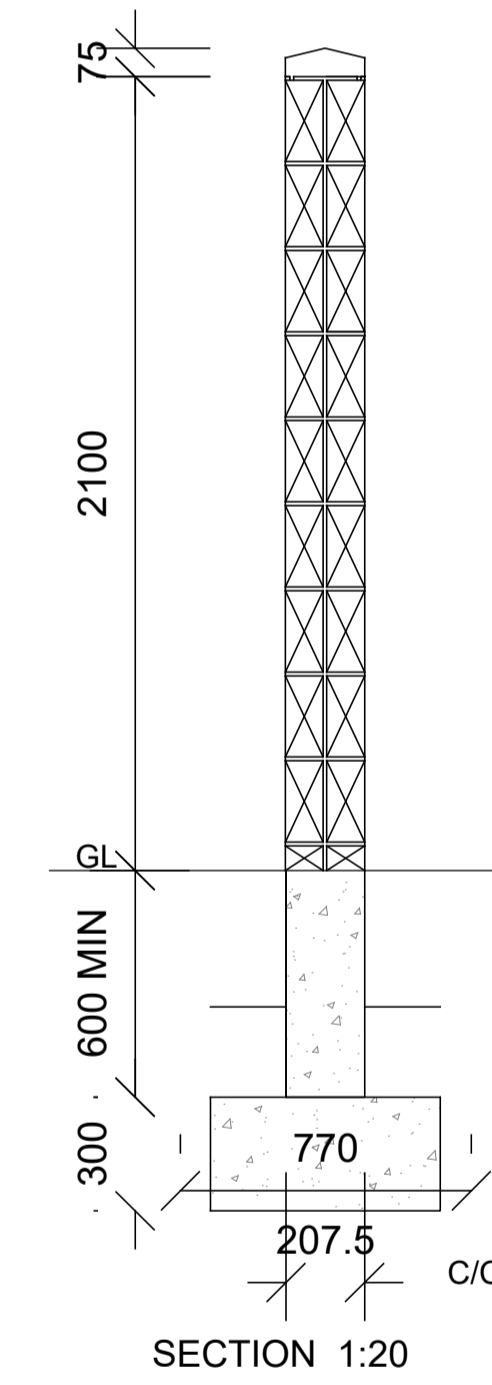


SECTION 1:20

BOUNDARY TYPE 5 - POST AND PLANK 2100MM



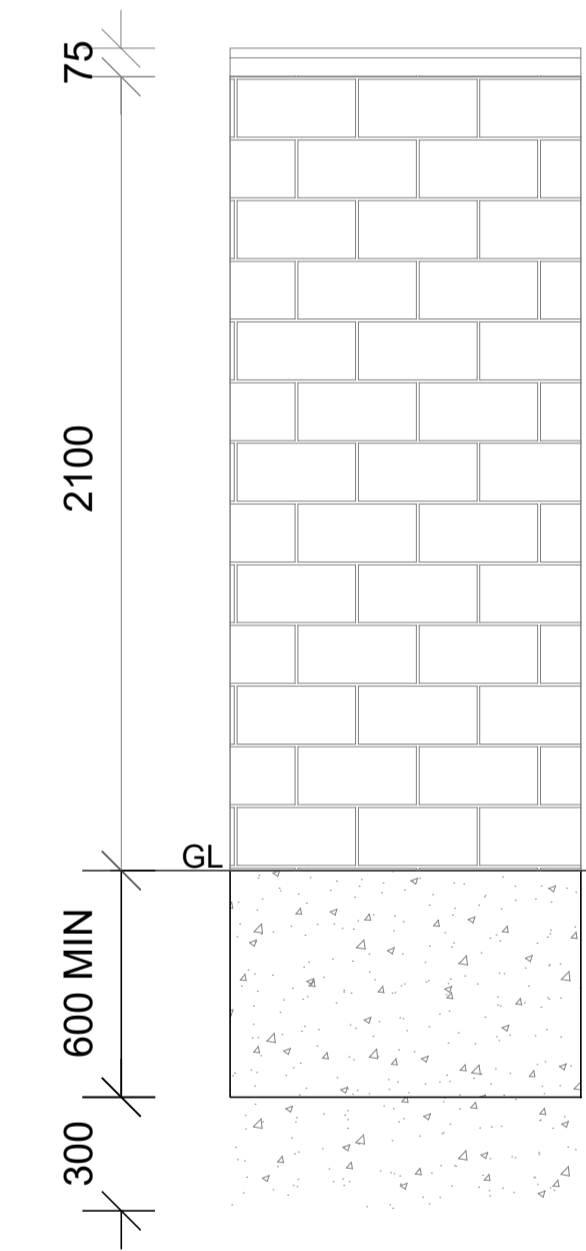
ELEVATION 1:20



SECTION 1:20

BOUNDARY TYPE 6 - BLOCKWORK 2100MM

(Existing Boundary to be retained and build up to 2m height with added concrete precast capping)



ELEVATION 1:20

Rev.	By	Date	Description
A	AS	17/05/2022	Planning Issue



Mill House, Mill Street, Dundalk, Co. Louth info@vandijkarchitects.com
+353 (0) 42 935 4466 www.vandijkarchitects.com

Drawing Title	
Boundary Types Part VIII Issueg Issue	

Scale	Drawing Number	Job
1:20	2043-P8-016	Greenfields Housing, Maynooth
Author	Client Reference	Client
A	2043-P8-016	Kildare Co.Co
Revised by	Drawn by	Date
AS	AS	17/05/2022

All works to be carried out using proper materials which are fit for the use they are intended and for the condition in which they are to be used. All materials used in connection with the works to comply with the construction products regulation (eu) no. 305/2011 and the harmonised technical specifications/standards that fall within the scope of the eu no. 305/2011.
Figured dimensions must be used in preference to scaled dimensions. Any dimensional discrepancies must be reported to the Architect immediately. This drawing remains the copyright of van Dijk Architects. It must not be used for any purpose building or otherwise without the express permission of this practice. Do not copy or redistribute these drawings or any additional information without the expressed approval of van Dijk Architects.